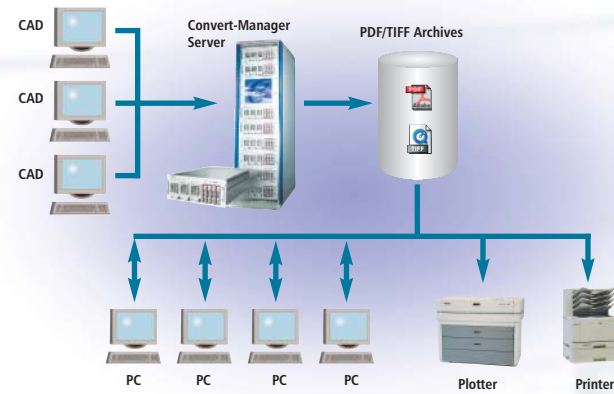


Convert-Manager: Specifications

In the field of technical graphic arts, the conversion of vector into bitmap files plays an important role regarding the large number of existing graphic formats. With the universally used Convert-Manager, softplot offers all professional users an ideal, versatile software solution for converting colour or monochrome graphic formats.



Vector to Raster

As a powerful converting program, the Convert-Manager supports the transformation of over 80 different data formats. To fulfil the increased usage of PDF documents, the intelligent software issues the data as PDF files. AutoCAD files also can be converted directly. Thus, a professional conversion of all data formats is ensured, from the most important applications into plot- and printable bitmap files.

Quick and Precise

The Convert-Manager guarantees a quick, high quality conversion of vector into bitmap files at a max. resolution of 600 dpi. 16 DIN A1 vector documents can be transformed per minute without any loss of quality. Oversized output formats like DIN A0 drawings with a length of 20 meters are easily processed. Furthermore, it is possible to process the converted documents directly through plot or archive systems.

Functionality

Optimizing the data handling requires functions such as the automatic operation mode, the regular directory control and the automatic archives back-up. An editor for pen tables ensures the correct width of lines and termination of ends. With its simple operation and menu-driven operation, the Convert-Manager is an indispensable tool. It can be easily integrated in existing IT/CAD surroundings by use of a command line operation with a set of parameters.

► Functions and Performance

- Converting HPGL, HPGL/2, HP/RTL vector data to bitmap files
- Monochrome and colour converting
- Automatic operating mode (server mode)
- Command line operation for simple integration into existing IT/CAD environments
- Automatic back-up of converted files/graphics
- Converting precision up to 600 dpi resolution
- Output format up to oversize, e.g. DIN A0 and 20m length
- Automatic operating mode
- Editor for pen tables
- Direct converting of AutoCAD documents

► Data Formats (Input)

- HPGL (Hewlett-Packard Graphics Language)
- HPGL/2
- HP/RTL (Hewlett-Packard Raster Transfer Language)
- TIFF (Tag Image File Format)
- CALS
- JPG (JPEG File Interchange Format)
- approx. 80 additional raster formats

► Data Formats (Output)

- Adobe PDF
- TIFF (Tag Image File Format)
- CALS
- PNG (Portable Network Graphics)
- EPS (Encapsulated PostScript)

- JPG (JPEG File Interchange Format)
- Additional formats on demand

► System Power

- with 400 dpi:
- approx. 16 DIN A1 converting HPGL/2 to TIFF G4 per minute
- approx. 40 DIN A1 raster-to-raster converting per minute

► System Requirements (recommended)

- Windows 2000®/Windows XP®
- Pentium IV Processor 1GHz and 512MB RAM
- 20GB free disk space
- 19" screen with 1280 x 1024 pts.

softplot GmbH
Dieselstrasse 10
85748 Garching b. Munich
Germany

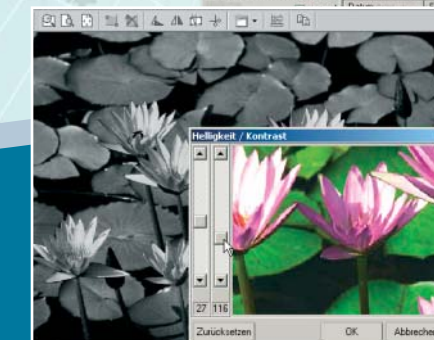
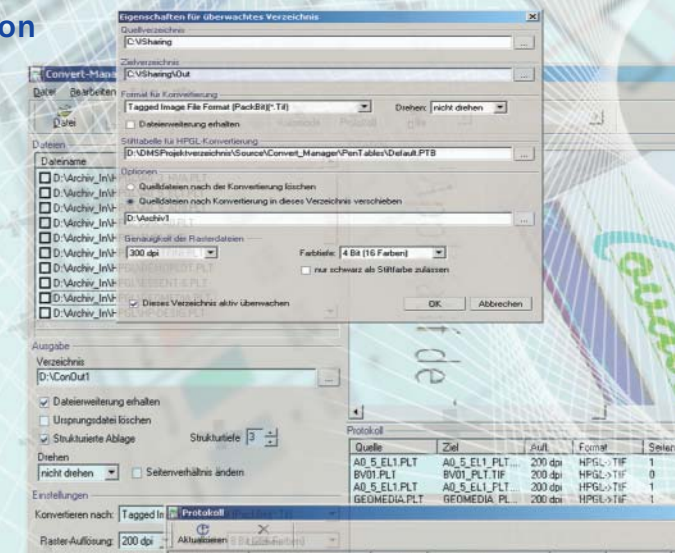


Phone +49 89 329 38 0
Fax +49 89 329 38 100
info@softplot.de
www.softplot.de

Convert-Manager

The Intelligent Software for Data Conversion in the Graphic Field

- Multitude of supported data formats
- Precise colour and monochrome transformation
- Automatic operation mode
- 600 dpi resolution
- Oversized output formats
- Automatic archives back-up
- Command line operation for simple integration into IT environment



softplot – software solutions at their best

