

Image-Manager: Specifications

▶ Scanning

Contex scanner interface (SCSI/USB/Fire-Wire)
Twain scanner interface
ADF support
Duplex scanning
Scanning of defined sections of the drawing
Scan-to-file with automatic generation of file names
Scan-to-copy with support of TIFF-Plotter (fast printing)
Automatic recognition of paper formats
Scanning of oversized documents
Direct generation of multiple page TIFF documents
Monochrome, gray-scale, and 24Bit colour
Automatic copy function
Standard storing of presets for various originals
Direct re-working without intermediate buffering
Recording of tasks
Administration of tasks via customer database (optional)

▶ Raster Processing

Drawing (circle, ellipse, arch, right-angle, etching etc.)
Text function
Stamps, watermarks
Stretching, compressing
Aligning, turning
Mirroring, inverting
Adjusting, rectification
DIN-specific adjustment of size
Cutting edges
Copying, adding, deleting of freely defined sections
Clipboard
Setting tables to exchange (e.g.) drawing heads
Symbol library
Batch processing for mass data administration
Poster setting for generating oversized graphics
Converting HPGL/2 files to raster files
Adobe PDF generation including content and keywords
Changing of resolution

▶ Printing and Plotting

Output of single files or document sets
Printing of defined sections of drawing
Optimizing of contrast for monochrome documents
Integrated interface to **Plot-Manager**
High-performance printing via direct TIFF plotter
Supports all Windows-based printers
Plotting using FTP
Output of additional information like user, date, stamps etc.
Scaling and automatic adjustment of size

▶ Archiving and Indexing

Combining documents with meta data
Setting individual data field schemes
Definition of obligatory fields
Guideline for search criteria
Setting for favourites
Whole text search in meta data
Database interface to MS Access®, Oracle8, SQL-Server (optional)

▶ Display

Dynamic zoom
Adjusting and depicting on a scale of 1:1
Depiction of gray-scales
Magnifying function
Preview window (Thumbnails)

▶ Additional Functions

Direct export of mails
Transferring data to CD-Rom archives with integrated display and archive program
Page management for generating multiple TIFF files

▶ Data Formats (Read)

HPGL (Hewlett-Packard Graphics Language)
HPGL/2

HP/RTL (Hewlett-Packard Raster Transfer Language)
TIFF (Tag Image File Format)
CALS
JPG (JPEG File Interchange Format)
approx. 80 additional raster formats

▶ Data Formats (Write)

Adobe PDF
TIFF (Tag Image File Format)
CALS
PNG (Portable Network Graphics)
EPS (Encapsulated PostScript)
JPG (JPEG File Interchange Format)
Additional formats on demand

▶ System/User Interface

Graphical MS Windows® user driven operation
Windows XP® menu depiction
MS Office symbolism and system
Easy to learn
Simple operation
Online help

▶ Settings

Line strength
Height of fonts
Editor for pen tables
Standard paths and favourites
Directory of library and resources
Definition of printer/plotter and plotter interfaces

▶ System Requirements (recommended)

Windows 2000®/Windows XP®
Pentium IV Processor 1GHz and 512MB RAM
20GB free disk space
19" screen with 1280 x 1024 pts.

Image-Manager

The Professional Scan, Copy and Raster Processing Software

- ▶ Integrated scanner interface
- ▶ Complex raster processing functions
- ▶ Indexing and archiving
- ▶ Individual symbol library
- ▶ Effortless batch processing
- ▶ Direct output of PDF files



softplot GmbH
Dieselstrasse 10
85748 Garching b. Munich
Germany



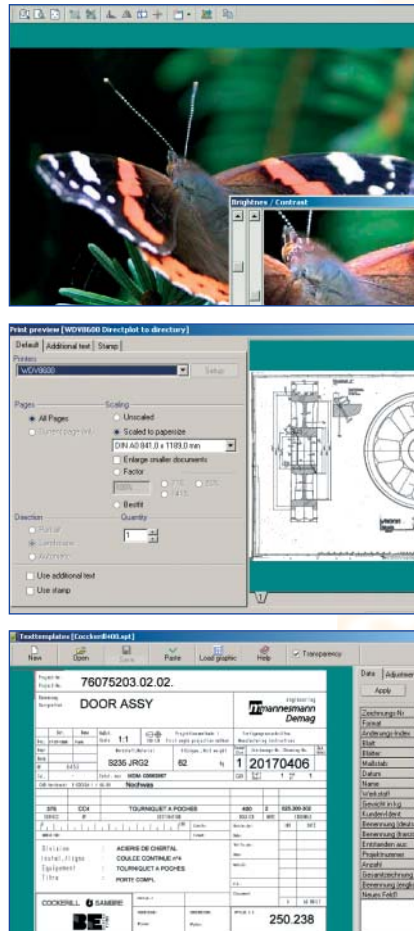
Phone +49 89 329 38 0
Fax +49 89 329 38 100
info@softplot.de
www.softplot.de

softplot – software solutions at their best



Image-Manager

powerful and user-friendly



▶ Scanner Interface

The integrated scanner interface of the Image-Manager supports all large-format Contex and TWAIN-compatible scanners.

The scanning process can be administered and carried out directly from the application. Scan-to-copy, scan-to-file, scan-to-PDF, and the automatic operating mode fulfil all professional demands excellently.

In addition, an automatic feeder with duplex operation for DIN A4 and A3 is also supported – an essential feature to simplify control of the scanning process and increase scanning speed.

▶ Display Parameters

Numerous display functions are available to enable the best possible document handling. These include the preview and surveying window, dynamic zoom, magnifying function, and the depiction of gray-scales and the display of characters like size, resolution, file format, measurement, and depth of colour.

▶ Drawing Functions

The Image-Manager supports a number of different drawing functions. Graphical objects or geometric forms (circle, line, ellipse, arch, right-angle, etching etc.) can be drawn quickly and precisely and inserted by mouse click. To achieve the required accuracy, objects and forms can be generated moreover through the manual entry of coordinates. All objects are able to be edited later, too.

▶ Image-Manager

High performance and user-friendliness exemplify the professional scan, copy and raster processing software of softplot.

The Image-Manager's extensive functions and numerous features win over professional users with ease. It's simply the best developed software solution for scanning, indexing and processing technical or graphic documents of every size.

▶ Raster Processing

Comprehensive processing functions make the professional correction and reworking of images possible. The image quality of even sub-standard originals can be considerably improved.

Most important raster processing functions:

- Aligning, turning, mirroring, inverting
- Automatic or manual adjusting, rectification
- Copying, adding, deleting, storing of freely defined sections
- Transparent or opaque inserting of sections

Size and resolution of the original documents can be changed at will. Drawing edges can be cut outside defined or highlighted areas.

Furthermore, drawings can be cut in line with DIN or user-defined format. Changing the size is done by stretching or compressing the geometry of the drawing.

▶ Copy Mode

The copy mode with its complex macros guarantees an optimal data handling. Parameters such as quality of the original, resolution, output device or output size can be defined through the manual copy mode.

Besides the manual or automatic copy mode, batch copying with automatic size recognition and output assignment results in best possible workflow.

▶ Indexing and Archiving

A clearly structured and definable document administration is essential, especially when working with extensive document sets. The Image-Manager offers a broadly configurable index data administration system. This guarantees an easy transfer to the document manager or the EDM and PDM systems.

Documents are detectable by the file name or the indicated meta data. These data are entered manually and stored in separate documents. The entry fields mask for documents can be defined by the user and, therefore, be flexibly adapted to each situation. A manageable editor with pull-down lists and presetting supports the easy and quick document administration. By using the universal archive system of the Image-Manager, documents can be administered and reproduced at will.

▶ Batch Processing

A supplementary function of the Image-Manager is batch processing for the automatic recognition of working procedures. After the digital recording of the original documents, they can be reworked almost automatically; choose which files have to be corrected and which reworking tasks are necessary. After that, all processes take place automatically.

Additional batch processing functions are the gray veil removing, adjusting of sloping documents, size adaptation to DIN-format, placement of stamps and paper output. The batch processing hence is an essential contribution to the improvement of the workflow.

▶ Symbol Libraries

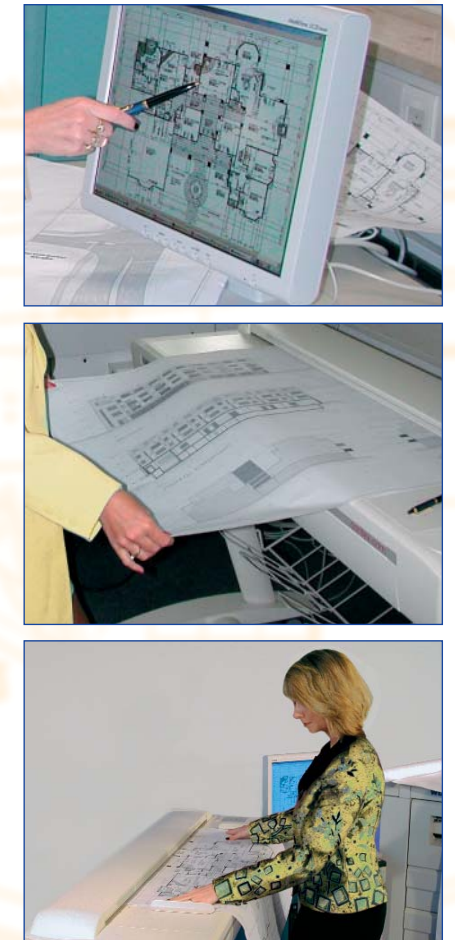
The Image-Manager provides the creation of individual symbol libraries for quick access to repeating symbols like graphics, stamps, watermarks or other drawing elements. Depending on the default, the documents can be supplied with a transparent or opaque logo or symbol.

▶ Printing and Plotting

Easy plotting and repro functions enable the user-friendly and reliable output of large-format documents.

In addition to printing documents at any Windows-based output device, the Image-Manager is equipped with an interface that provides a direct data transfer to TIFF-plotters. By processing the TIFF-files via the plotter, the power is increased considerably. Furthermore, the scanned files can be directly output as Adobe PDF or multiple page TIFF files.

Supplementary printing functions consist of true to scale plotting, output of defined sections of the drawing, and automatic size



adjustment. Output of extra information like date, logos, watermarks etc. is also included.

