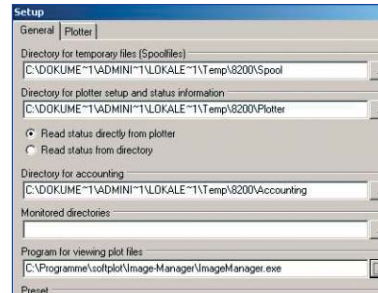


Plot-Manager: Specifications



Plot-Management

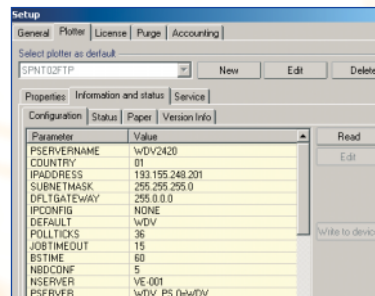
- Output of document sets
- Repeating of plot jobs
- Staggered plotting
- Diversion of plot jobs
- Editing of plot parameter
- Integrated HPGL, HPGL/2, HP/RTL raster processing
- Allocation of pen tables
- Supports all WEB-based plotters via FTP
- Remote administration for WDV-Controllers
- Integrated viewer with basic editing functions (mirroring, turning)
- Supports user via assistant
- Message system (for status and error message): informing the client about status of plot jobs

Functions

- Process and status monitoring of output devices
- Supervision of paper status
- Online control of folding systems
- Formatting of documents
- Scaling of documents
- Automatic device allocation according to paper format
- Stamps (transparent/opaque)
- Watermarks

Integration

- Client-Server application
- Direct support of printers/plotters of numerous manufacturers
- Integration in CAD environment via primary clients for AutoCAD, Pro/E
- Integrated client for SAP and EDM systems of other manufacturers
- Data transfer via ASCII-based job tickets
- Automatic transmission of plot data to TIFF archives
- User-defined fields for running book-keeping
- Editor for pen tables

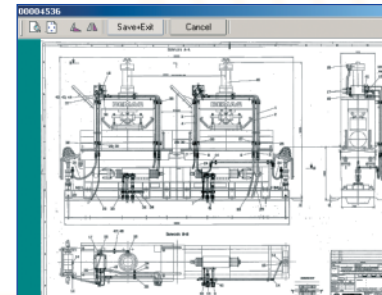


System Power

approx. 40 DIN A1 documents/minute with recommended hardware configuration

Accounting

- Bookkeeping with user-defined input masks containing obligatory fields
- Paper consumption
- Composer's name
- Workstation
- Output devices
- Date of print job
- User-defined details like number of project, order, or customer
- Arranging/filtering date and user-defined fields



Export of bookkeeping functions into MS Excel® or any database exchange format

Data Formats

- HPGL (Hewlett-Packard Graphics Language)
- HPGL/2
- HP/RTL (Hewlett-Packard Raster Transfer Language)
- TIFF (Tag Image File Format)
- CALS
- JPG (JPEG File Interchange Format)
- approx. 80 additional raster formats

System/User Interface

- Windows XP® menu depiction
- MS Office symbolism and system
- Easy to learn
- Simple operation
- Online help

System Requirements (recommended)

- Windows 2000®/Windows XP®
- Pentium IV Processor 1GHz and 512MB RAM
- 20GB free disk space
- 19" screen with 1280 x 1024 pts

Plot-Manager

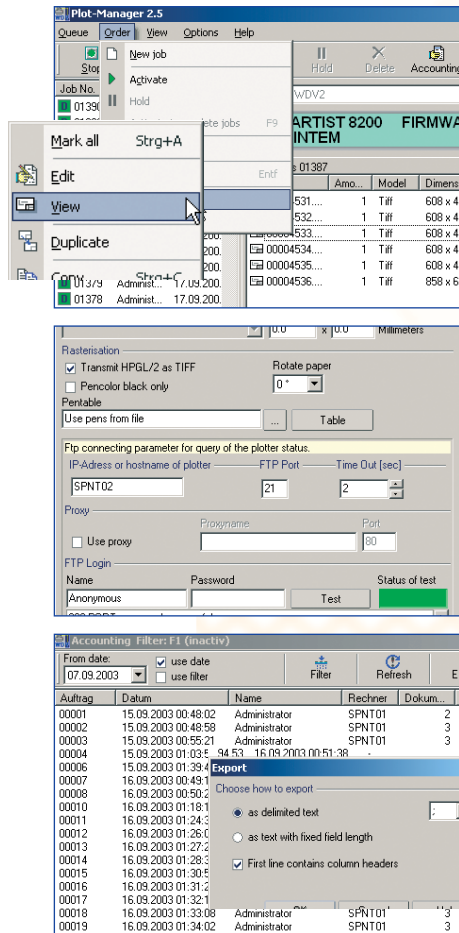
The Innovative Software Solution for Plot Administration

- Collating, parameterizing and administering of plot jobs
- Output parameters setting
- Online folder control
- Administration and monitoring of output devices, media and plot job status
- Calculation of costs through automatic accounting
- Fast data transfer from user to output device



Plot-Manager

powerful and easy to use



▶ Printing and Plotting

The Plot-Manager was especially developed for the output of plot files; it centrally administers all configurations that are combined with printers and plotters.

The setting of parameters for the outputted documents as well as the collating of plot tasks can be efficiently carried out with this software program. The making of plot jobs is system supported and its use is very clearly designed.

Integrated assistance with displayed help information guarantees simple operation.

▶ User-defined Output Parameters

The definition of output parameters allows the user to choose from a number of variables. In addition to single plot jobs, a set of documents can also be created.

The documents can be scaled without steps and possess different data or drawing formats. The type of the output media is determined at will. The integrated viewer enables the editing functions to turn or mirror the documents.

Plot jobs can be activated immediately or repeatedly, several output parameters can be changed at will. Documents can be supplied with symbols like watermarks or logos

and details about user's name, date, time etc. These specific features enable the unmistakable assignment of plots to orders or users.

▶ Status of Output Devices, Media and Plot Tasks

The user may, at anytime, overview the status of the plot jobs, the output devices and the media through the dynamic control display. Diverting or changing the chronological sequence of the plot jobs avoids the wasting of time. Different priorities can be set according to the urgency of printing tasks.

Extensive filtering possibilities are used to find a specific order fast, and without interrupting any of the workflow.

Notifications on status or error of plot jobs are passed to and processed by the Plot-Manager and a response about the status is then sent to the user.

▶ Assignment and Selection

An automatic plot assignment to the output devices results in optimal workflow.

Depending on size and type of medium to be printed, a lower

media roll exchange and an improved utilization of the medium may be realized.

Naturally, the user has the opportunity to choose any printing queue for his plot jobs. A warning is issued if the selected output device is not in the position to print a particular data format correctly.

▶ Accounting

Accounting with user-defined input fields ensures standardized plot management and enables an entire overview of all plot activities as well as of printers and plotters.

Information, such as project number or cost centre can be processed together with the plot job. The analysis of the accounting data is done by filters that refer directly to the user's fields. Thus, the paper consumption and plot volume of a particular project or cost centre can be determined.

Besides the protocol output of the performed tasks, weekly excel lists including all book keeping data of the Plot-Manager are created automatically. These excel tables guarantee exact calculations without any additional work. With this ability of calculation, costs can be assigned specifically.

▶ Simple Integration

One of the Plot-Manager's numerous advantages is its uncomplicated integration into the existing IT environment. This ability to integrate the plot administration program relies on the client-server application, the integrated clients for SAP and EDM systems, Pro-Engineer and AutoCAD.

The data exchange takes place through ASCII based job tickets; there is an automatic transfer of the plot data to TIFF archives.

The intelligent software solution supports all colour output devices working with Windows-drivers. Therefore, printers and plotters of various manufacturers can be integrated into the plot management.



▶ Plot-Manager

The cost-effective plot management software for outputting documents to various printers and plotters is characterized by superior performance and ease of operation.

The Plot-Manager of softplot serves all professional users demands and supports you in the administration of plot jobs. Its extensive functions allow the optimization of all workflow.

